

参数规格/Specifications

外型尺寸 Dimensions	1020mm(L) × 1180mm(W) × 1450mm(H) (标配) (standard)
重量 Weight	556kg
电源 Power Supply	AC220V(50Hz, 单相) 1.5kw (平均功率: 350w) AC220V(50Hz, single phase) 1.5kw (Average power: 350w)
气源 Air Supply	0.5MPa ~0.7MPa
真空产生 Vacuum Generation	内置真空泵 Built-in vacuum pump
贴头数量 Mounting Head Quantity	4个 4 Head
贴装速度 Mounting Speed	14400CPH (公司最佳条件下) Optimal Speed 14400CPH (best conditions under our company)
贴装精度 Mounting Accuracy	(xy)±0.035mm CPK≥1.0
器件贴装高度 Component Height	≤12mm
器件贴装类型 Component Type	电阻电容 排阻、圆柱形二极管、铝电容、SOT、SOP、QFP、QFN、BGA等。 Resistor capacitor exclusion, cylindrical diode, aluminum capacitor, SOT, SOP, QFP, QFN, BGA, etc
器件贴装范围 Component Range	英制01005和30mm×30mm范围内元件的贴装。 Can mount components within the range of imperial 01005 to 30mm×30mm
PCB厚度 PCB Thickness	0.6mm~3.5mm
PCB尺寸 PCB Size	350mm(长)×280mm(宽) (标配); 600mm(长)×280mm(宽) (选配)。 350mm(L)×280mm(W) (standard); 600mm(L)×280mm(W) (optional)
PCB传送 PCB Conveying	PCB自动传送。 Automatic Transfer Rails
吸嘴更换 Nozzle Change	自动更换 (13孔吸嘴库) Automatic nozzle change (13-hole nozzle library)
控制系统 Control System	(Linux操作系统) 配显示器、键盘、鼠标 (Linux system) with monitor, keyboard, mouse
驱动系统 Drive System	X, Y轴采用伺服电机驱动, 柔性S加减速。 X&Y axis driven by servo motors, adopting flexible S-curve acceleration and deceleration
传动系统 Transmission System	X, Y轴采用滚珠丝杆和直线导轨。 Ball screw + linear guide
供料系统 Feeding System	50个 (8mm为准/支持震动飞达、TRAY盘) 50 Yamaha 8mm standard pneumatic/electric feeder stacks (also suitable for IC tray and stick feeder)
视觉系统 Vision System	飞拍相机×4个 (适用器件大小: 14mm×14mm) Fly camera×4 (component size applicable: 14mm×14mm) IC相机×1个 (适用器件大小: 30mm×30mm) IC camera×1 (component size applicable: 30mm×30mm) Mark相机×2个 Mark camera×2



Official Website

湖南常衡机电有限公司 CHARMHIGH TECHNOLOGY LIMITED

邮箱 / E-mail: sales@charmhigh-tech.com
 官网 / Web: www.charmhigh-tech.com
 WhatsApp/ WeChat: +86 135 106 75756
 Official Website: www.charmhighsmt.com
 地址: 中国·湖南·长沙市高新开发区雷锋街道明湖路392号常衡机电
 No.392, Minghu Road, Leifeng Street, High-tech Development Zone,
 Changsha City, Hunan Province, China



中国高端贴片机领导品牌
Chinese Leading Brand of High-end Pick and Place Machine

CHM-551P 四头高精小型贴片机

4-head Small High-precision Pick and Place Machine



提供SMT一站式设备与服务
Provide SMT one-stop equipment and services



最大速度: 14400CPH(在本公司最佳条件下)

贴装精度: $(xy)\pm 0.035\text{mm}$ CPK ≥ 1.0

贴装范围: 保障最小英制01005和30mm \times 30mm内元器件高精度的稳定贴装

Optimal Speed: 14400CPH (under the best conditions of our company)

Mounting Accuracy: $(xy)\pm 0.035\text{mm}$ CPK ≥ 1.0

Components Mounting Range: Inch size 01005-30mm \times 30mm

ANC (吸嘴自动更换)
ANC (Auto Nozzle Changer)

吸嘴自动分配、吸嘴自动更换。当泛用机使用时，可以减少贴装轮次，提高生产效率。
Automatic nozzle distribution and automatic nozzle replacement

支持CPK
Support CPK Detection

制程能力指标，保障高质量SMT生产
Process capability indicators to ensure high-quality SMT production

内置真空泵+SMC电磁阀结构
Built-in Vacuum Pump + Solenoid Valve Structure

采用真空泵装置，减少抛料以及提高贴装的稳定性。电磁阀结构，使吸附性更强更稳定。
The vacuum pump device is used to reduce the throwing and improve the stability of mounting. The solenoid valve structure makes the adsorption stronger and more stable

高精通用贴装头
High-precision Universal Mounting Head

独立的Z轴与R轴电机控制
Independent Z-axis and rotating motor control

自动热补偿校正系统
Automatic Thermal Compensation Correction System

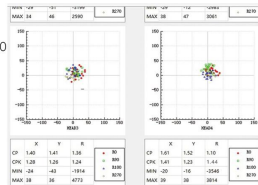
定时监控精度，并自动修正补偿，确保设备贴装的稳定性
Regularly monitor accuracy and automatically correct compensation to ensure the stability of equipment mounting



1. 高端配置，对标进口，使制程能力有保障 (High-end configuration, comparable to imported products, ensures process capability)

支持CPK测试
Support CPK Detection

贴装精度: $(xy)\pm 0.035\text{mm}$ CPK ≥ 1.0
使得您的SMT生产稳定可靠,提高良率,减少返修。
Mounting accuracy: $(xy)\pm 0.035\text{mm}$ CPK ≥ 1.0 ensures continuous and stable process capability.



铸铁结构
cast iron structure

高速连续工作稳定性更佳。
High-speed continuous working stability is better.



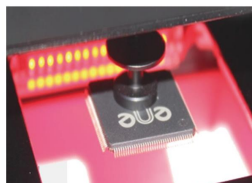
内置真空泵+SMC电磁阀结构
Built-in Vacuum Pump + Solenoid Valve Structure

使吸附性更强更稳定。
Make the adsorption stronger and more stable.



高清IC视觉系统
HD IC Vision System

高清识别BGA、QFP、QFN等30*30mm内器件，实现高精泛用贴装。
High-definition identification of BGA, QFP, QFN and other 30*30mm components to achieve high-precision general-purpose mounting.



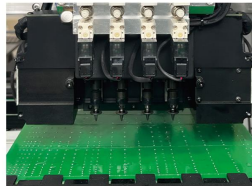
自动热补偿校正系统
Automatic Thermal Compensation Correction System

工作中监控并纠正因热能导致的精度偏差，持续维持贴装的精度与稳定性。
Monitor and correct accuracy deviations caused by thermal energy during work to continuously maintain mounting accuracy and stability.



真空传感装置
Vacuum Detection Function

每个吸嘴具备独立检测功能,提高设备的稳定性,产品的可靠性。
Each nozzle has an independent detection function to improve the stability of the equipment and the reliability of the product.



2. 确保设备效率与稳定性 (Ensure Equipment Efficiency and Stability)

高精通用贴装头
High-precision Universal Mounting Head

独立的Z轴与R轴电机控制，配合高速的前置相机与1组精密的IC视觉系统，实现泛用高速贴装。
Independent Z-axis and R-axis motor control, combined with a high-speed front camera and a set of precision IC vision systems, realize universal high-speed mounting.



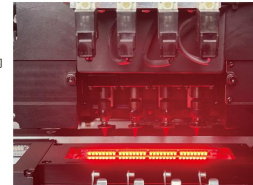
ANC (吸嘴自动更换)
ANC (Auto Nozzle Changer)

13位吸嘴库，可预置不同型号吸嘴，软件控制，根据器件贴装需求，自动分配与更换吸嘴，减少贴装轮次，提高生产效率。
The 13-hole nozzle library can preset different types of nozzles. Software control automatically allocates and replaces nozzles according to component mounting requirements, reducing mounting rounds and improving production efficiency.



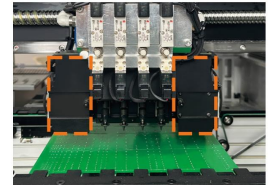
高速飞拍相机
High Speed Snapshot Camera

可高速同步识别14mm \times 14mm以内零件，提高工作效率。
Can simultaneously identify 14mm \times 14mm components at high speed to improve work efficiency.



双Mark相机
Dual Mark Camera

1. 识别范围更广;
2. 校正PCB角度与坐标采集;
3. 快速示教取料位置;
1. Wider recognition range.
2. Correct PCB angle and coordinate acquisition.
3. Quickly teach the component picking position.



自动传板
Automatic Board Transfer



贴头同取
4 Heads Capable of Picking Components Simultaneously

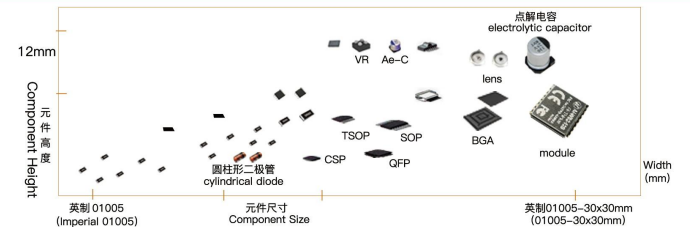
采用贴头Z轴独立电机闭环控制，同心度好，同取精度高，可实现器件同取高速贴装。
The Z-axis independent motor of the mounting head has a closed-loop control of a high-precision nozzle rod. It has good concentricity, high precision in simultaneous picking, and is not easy to deform. It can realize simultaneous picking and high-speed mounting of components.



3. 贴装能力 (Mounting Capabilities)

泛用贴装各种元器件
General Purpose Mounting of Various Components

可保障最小英制01005和30mm \times 30mm内元器件高精度的稳定贴装。
It can achieve high-precision and stable mounting of the smallest 01005 and large-size components.



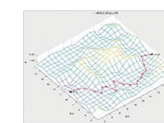
软件功能集成化
Software Function Integration



坐标导入
Coordinate Import
坐标一键导入，实现快速编程。
Coordinates can be imported with one key to realize fast programming.



器件编辑
Component Editing
设有标准元件库，支持新器件的编辑与注册，可快速导入相应元件库。
There is a standard component library to support editing and registration of new devices.



智能优化
Intelligent Optimization
路径自动优化，吸嘴自动分配，飞达自动排列，提高编程效率、贴装速度。
Automatic path optimization, automatic nozzle allocation, automatic arrangement of feeders.



功能集成 操作便捷
Function Integration Convenient Operation
轻松进行与管理生产，简单易学。
Easy to carry out and manage production, easy to learn.



YAMAHA电动飞达
YAMAHA Electric Feeder



YAMAHA气动飞达
YAMAHA Pneumatic Feeder



振动飞达
Vibration Feeder



IC托盘
IC TARY



IC柜
Auto Tray Feeder

IC柜/Auto Tray Feeder:
可同时支持15种标准料盘
Can support 15 kinds of standard IC trays at the same time