

参数规格/Specifications

外型尺寸 Dimensions	890mm(L) × 1450mm(W) × 1500mm(H)
重量 Weight	960kg
电源 Power Supply	AC220V(50Hz, 单相) 功率1.8kw AC220V(50Hz, single phase), 1.8kw
气源 Air Supply	0.5MPa ~0.7MPa
真空产生 Vacuum Generation	内置真空泵 Built-in vacuum pump
贴头数量 Mounting Head Quantity	6个 6-head/spindle
贴装速度 Mounting Speed	27800CPH (公司最佳条件下) Optimal Speed 27800CPH (best conditions under our company)
贴装精度 Mounting Accuracy	(xy)±30µm CPK≥1.0
器件贴装高度 Component Height	≤12mm
器件贴装类型 Component Type	电阻电容 排阻、圆柱形二极管、铝电容、SOT、SOP、QFP、QFN、BGA等。 Resistor capacitor exclusion, cylindrical diode, aluminum capacitor, SOT, SOP, QFP, QFN, BGA, etc.
器件贴装范围 Component Range	英制01005至36mmX36mm,以及超大器件贴装。 Inch size 01005 to 36mm*36mm, and larger components mounting.
PCB厚度 PCB Thickness	0.6mm~3.5mm
PCB尺寸 PCB Size	350mm(长)×300mm(宽) (标配) 350mm(L)×300mm(W) (standard)
PCB传送 PCB Conveying	3段式轨道自动传送, PCB支撑装置 3-section-rail automatic conveying,PCB support
吸嘴更换 Nozzle Change	自动更换 (19孔吸嘴库) Automatic nozzle change (19-hole nozzle library)
控制系统 Control System	内置工业电脑(运行Windows 7)配显示器、键盘、鼠标 Built-in industrial computer, equipped with monitor,keyboard and mouse
驱动系统 Drive System	X, Y轴采用松下伺服电机驱动 X&Y axis driven by Panasonic servo motors
传动系统 Transmission System	X, Y轴采用研磨丝杆和静音直线导轨 Ground screws + linear guide
供料系统 Feeding System	50个NXT 8mm标准飞达安装位 (可安装IC托盘和振动飞达) 50 NXT 8mm standard feeder stacks (also suitable for IC tray and stick feeder)
视觉系统 Vision System	飞拍相机×6个 (适用器件大小: 16mm×16mm) Fly camera×6 (component size applicable: 16mm×16mm) IC相机×1个 (适用器件大小: 36mm×36mm) 支持大器件分割识别功能, 自动识别引脚与特征 IC camera×1 (component size applicable: 36mm×36mm), it has the function of image stitching, automatic pin and feature recognition Mark相机×2个 Mark camera×2



中国高端贴片机领导品牌
Chinese Leading Brand of High-end Pick and Place Machine
提供SMT一站式设备与服务
Provide SMT one-stop equipment and services

TC06

六头模组泛用贴片机

6-head/spindle module universal pick and place machine



湖南常衡机电有限公司

CHARMHIGH TECHNOLOGY LIMITED

电话 / Telephone: +86 131 0721 9945

邮箱 / E-mail: sales@charmhigh-tech.com

官网 / Web: www.charmhigh-tech.com

WhatsApp/Wechat: +86 135 1067 5756

Official Website: www.charmhigh-tech.com

地址: 中国•湖南•长沙市高新区雷锋街道明湖路392号常衡机电

最大速度: 27800CPH (在本公司最佳条件下)

贴装精度: (xy)±30μm CPK≥1.0

贴装范围: 可保障最小英制01005和大尺寸元器件高精度的稳定贴装

Optimal Speed: 27800CPH (under the best conditions of our company)

Mounting Accuracy: (xy)±30μm CPK≥1.0

Components Mounting Range: Inch size 01005–36mm×36mm and larger components

铸铁一体成型, 超强X横梁结构, 同价位绝无仅有机型

Monolithic Cast Iron Construction with X-Beam Reinforcement – Unmatched Structural Rigidity in Its Class

25%的价格, 进口机相同性能, 极具性价比

Delivering Premium Performance at 1/4 the Cost: Match Global Brands' Specs with Unbeatable Value

NXT完全兼容飞达, 保证供料的稳定性

Full NXT feeder compatibility ensures material stability

体积小巧, 满足大部分商用电梯进出

Space-optimized dimensions compatible with standard commercial elevators.

松下伺服、研磨丝杆, 保证高速高精度

Panasonic servo motors paired with precision ground ball screws enable high-speed, high-accuracy operation

支持离线编程, 节省换线时间

Support offline programming, saving line change time

模组式泛用机, 根据不同产能自由组合

Modular architecture allows flexible capacity expansion through unit combinations



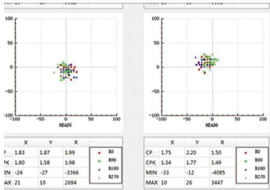
1.高端配置, 对标进口, 使制程能力有保障 (High-end configuration, comparable to imported products, ensures process capability)

支持CPK测试

Support CPK Detection

贴装精度: (xy)±30μm CPK≥1.0, 使得您的SMT生产稳定可靠, 提高良率, 减少返修。

Mounting accuracy: (xy)±30μm CPK≥1.0 ensures continuous and stable process capability.

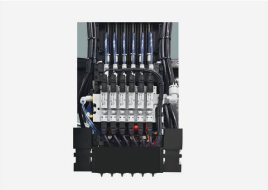


高精度泛用贴装头

High-precision Universal Mounting Head

独立的Z轴与R轴电机控制, 配合高速的前置相机与1组精密的IC视觉系统, 实现泛用高速贴装。

Independent Z-axis and R-axis motor control, combined with a high-speed front camera and a set of precision IC vision systems, realize universal high-speed mounting.

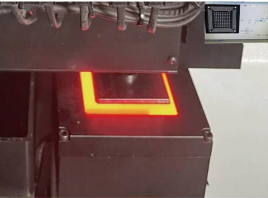


高清IC视觉系统

HD IC Vision System

1. 支持36mm×36mm以内大器件全局一次性成像与高清识别。
2. 支持超大器件识别与贴装: 将元器件进行分割识别, 精准合并为单个器件影像, 然后再进行整个器件显示, 实现精准贴装。

1. Support global one-time imaging and high-definition identification of large components within 36mm×36mm.
2. Supports oversized component identification and mounting: components are segmented and identified, accurately merged into a single component image, and then the entire component is displayed to achieve accurate mounting.



真空传感装置

Vacuum Detection Function

每个吸嘴具备独立检测功能, 提高设备的稳定性, 产品的可靠性。

Each nozzle has an independent detection function to improve the stability of the equipment and the reliability of the product.



机架结构

Frame Structure

采用进口机基层架构: 平台以及Y轴横梁一体铸造, 使设备在高速工作状态下运行稳定可靠。

The imported machine base structure is adopted: the platform and the Y-axis beam are cast in one piece, which makes the equipment run stably and reliably at high speed.



2.确保设备效率与稳定性 (Ensure Equipment Efficiency and Stability)

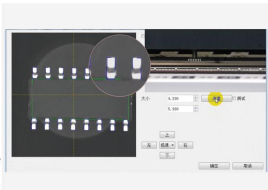
自动识别引脚

数量与特征

Automatically identify chip pin count and features

与传统的只能识别芯片本体, 增加芯片引脚识别功能。通过视觉图像算法, 实现芯片更精准更稳定贴装。

Most traditional machines can only identify the chip body. The machine adds chip pin recognition function and uses visual image algorithm to achieve more accurate and stable chip placement.

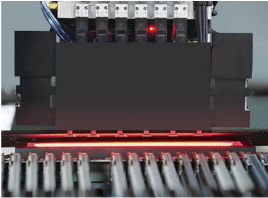


高速飞拍相机

High Speed Fly Camera

可高速同步识别16mm×16mm以内器件, 提高工作效率。

Can simultaneously identify 16mm×16mm components at high speed to improve work efficiency.

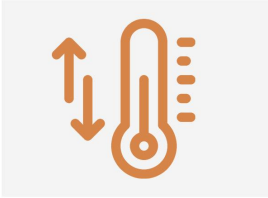


自动热补偿校正系统

Automatic Thermal Compensation Correction System

工作中监控并纠正因热能导致的精度偏差, 持续维持贴装的精度与稳定性。

Monitor and correct accuracy deviations caused by thermal energy during work to continuously maintain mounting accuracy and stability.



内置真空泵+电磁阀结构

Built-in Vacuum Pump + Solenoid Valve Structure

优化成真空泵装置, 采用电磁阀结构, 使吸附性更强更稳定。

It is optimized into a vacuum pump device and adopts a solenoid valve structure to make the adsorption stronger and more stable.

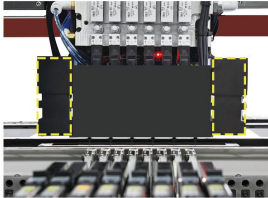


双Mark相机

Dual Mark Camera

1. 识别范围更广;
2. 校正PCB角度与坐标采集;
3. 快速示教取料位置;

1.Wider recognition range.
2.Correct PCB angle and coordinate acquisition.
3.Quickly teach the component picking position.



50组料栈(8mm为基准)

50 feeder stacks (8mm standard)

采用NXT电动飞达供料, 供料精度达到±0.03mm, CPK≥1.0, 支持英制01005供料。

Adopt NXT electric feeder for feeding, feeding accuracy reaches ±0.03mm, CPK≥1.0, supports 01005 feeding.



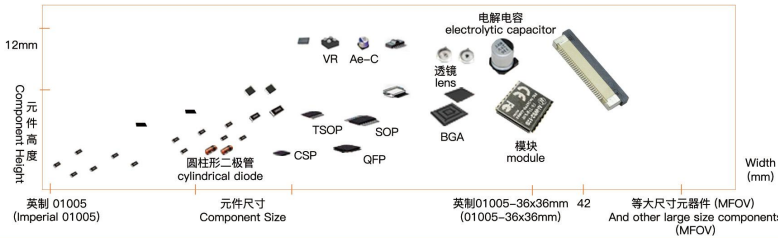
3.贴装能力与基板应对能力 (Mounting Capabilities and Substrate Processing Capabilities)

泛用贴装各种元器件

General Purpose Mounting of Various Components

可实现最小英制01005和大尺寸元器件高精度的稳定贴装。

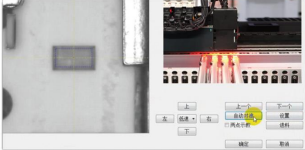
It can achieve high-precision and stable mounting of the smallest 01005 and large-size components.



4.简化编程 (Simplified programming)

增加自动校准取料位置功能

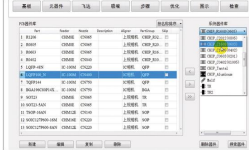
Added automatic calibration function for picking position



告别手动校准, 升级一键自动校准取料位置。使操作更简单, 编程更高效。Say goodbye to manual calibration and upgrade to one-key automatic calibration of the material picking position, making operation simpler and programming more efficient.

优化系统器件库

Optimize system device library



器件库增加常规封装元器件对应贴装参数, 编程中快速找到对应元器件, 常规元器件对应的贴装数据设置完成, 大大简化了编程操作。The device library adds mounting parameters corresponding to conventional packaged components, allowing you to quickly find corresponding components during programming. The mounting data corresponding to conventional components is set, greatly simplifying programming operations.

供料方式 Feeding System

供料方式: 采用电动飞达供料。

飞达上料台: 支持离线事先上料, 节省工作时间。

振动飞达: 通过振动飞达支持管状物料的供料。

IC托盘: 支持TRAY盘供料及散料供料。

Feeding method: electric feeder is used for feeding.

Feeder feeding table: supports offline feeding in advance, saving working time.

Vibration feeder: support the feeding of tubular components.

IC tray: support TRAY feeding and bulk components feeding.

