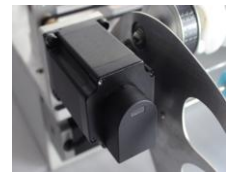
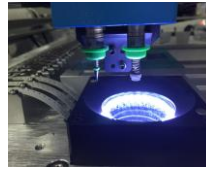


CHM-T36VB PICK AND PLACE MACHINE

- * 2 Placement Heads + **58 feeders**
- * Higher precision **linear guide**
- * High speed mounting with 2 Vision cameras
- * Motors with encoder, closed-loop control
- * External PC operation with win7,10 syst
- * Cut tape/ IC tray/ bulk IC support
- * High quality Juki Nozzles
- * Industry high reliable mainboard
- * Multi PCB assembly support



Up&down 2 vision cameras; IC tray; Motor closed-loop control



LEFT: 29-FEEDER

RIGHT: 29-FEEDER



External Computer Operation (windows)



Vibration feeder supported (optional)

Model	CHM-T36VB
PCB thickness	0.6-3.5mm
PCB max size	10*10mm ~ 345mm(L)×360mm(W)
Support components	0402/0603~5050 / SOT / SOP / QFP / QFN / BGA etc. (different kinds of capacitors and resistors, diode, triode, LED , IC etc)
Mounting speed	Without vision:4000cph; With Vision:2500cph
Precision	±0.025mm
Placement head	2 heads
Feeding system	58 tape feeders(8mm 44; 12mm 8; 16mm 4; 24mm 2); 14 front bulk IC tray; 10 custom IC tray(cut tape support)
Demension	1310mm(L)×710mm(W)×340mm(H)
Vision detection	Up-looking camera: components auto correction (vision range: 22*22mm) Down-looking camera: PCB mark point calibration, components calibration
Motor control	XY Axis stepper motor with encoder closed-loop control
Components leakage detection	Z Axis reset detection; Vision inspection
Main board	High-reliability industry motherboard
Touch Screen	No touch screen, operation with external PC(windows7,10)
Motion system	Synchronous belt+optic axis+linear guide rail
Air source	Built-in 2 vacuum pumps (no need external air compressor)
Pull pin needle auto return	Yes, to avoid pull pin broke
Support software	Altium designer,Protel99SE,PADS,Kicad,Eagle,Cadint,Cadence Orcad,Cadence Allegro,PROTEUS etc
Power supply	AC220V 50Hz / AC110V 60Hz
Power	300W
Net weight	50Kg